



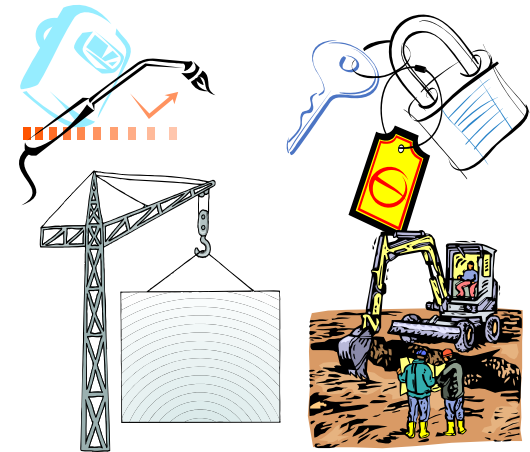
# Managing Safe Work (MSW) – Standardized OE Process

Asia South SBU  
Thailand Profit Center

**CHESM Engagement Meeting**

**March 10, 2009**

**By Surin J. - MSW Process Advisor**





# Managing Safe Work (MSW) Process

- *What is the Managing Safe Work Process?*
- *Status of Thailand MSW Implementation?*
- *How does MSW Apply to you?*
- *What is your role in MSW?*
- *What are the expectations of Thailand Management?*
- *Q&A*



## What is the Managing Safe Work Process?

- The Managing Safe Work (MSW) is a management system, written in a five component model to manage safe work practices in order to fulfill Chevron's Operational Excellence Management System expectations.
- *The purpose of the Managing Safe Work (MSW) process is to identify, assess, and mitigate, control or eliminate the risks associated with work.*
- *The MSW process provides for:*
  - *the identification and evaluation of job task hazards*
  - *specification of control measures and management of those measures*
  - *control of the work in progress and,*
  - *behaviors to support safe work*

# MSW Process Components

Process defines a system to manage work safely



## PROCEDURE

1

### BEHAVIORS TO SUPPORT MSW

Supervision at every level is responsible for understanding and fulfilling their roles and responsibilities in support of MSW and the translation of those to appropriate actions and behaviors.

## PROCEDURE

2

### SAFE WORK PRACTICES

Develop and maintain SWP standards that contain critical elements, and to promote harmonization of SWP standards across GU.

- Bypassing Critical Protections
- Isolation of Hazardous Energy
- Confined Space Entry
- Lifting/Rigging
- Permit to Work
- Simultaneous Operations
- Excavation
- Hot Work
- Working at Heights
- Electrical

## PROCEDURE

3

### STANDARD OPERATING PROCEDURES

Define how SOPs and their use by qualified personnel can be considered appropriate for planning work in the MSW process.

## PROCEDURE

4

### HAZARD ANALYSIS

This procedure defines and provides expectations, guidance and tools for performing and conducting hazard analysis.

## PROCEDURE

5

### HAZARD IDENTIFICATION

Effective hazard identification is a key step to planning and subsequently working safely with minimal risk of incidents and accidents.

## PROCEDURE

6

### STOP WORK AUTHORITY

All company employees and contractors are authorized and responsible to stop work when an unsafe condition or act could result in an undesirable event.

## PROCEDURE

7

### TRAINING / COMPETENCY

Ensure that persons with roles in the MSW process are trained and authorized to carry out their respective roles and responsibilities.

# Thailand MSW Implementation 2008 Focus



- **Hazard Analysis Procedure**
- **Stop Work Authority (SWA) Procedure**
- **Permit to Work SWP**
- **Isolation of Hazardous Energy SWP**
- **Bypassing Critical Protections SWP**
- **Hot Work SWP**
- SimOps SWP
- Confined Space Entry SWP
- Behavior to Support MSW
- Standard Operating Procedure Qualification Procedure
- Excavation SWP
- Work at Height SWP
- Lifting & Rigging SWP
- Electrical Safety SWP
- Training and Competency Procedure
- Developing and Maintaining Safe Work Practice Procedure
- Hazard Identification

---

*Note: **Bold** = 2008 Focus Items*

# Thailand MSW Implementation 2009 Focus



- Hazard Analysis Procedure
- Stop Work Authority (SWA) Procedure
- Permit to Work SWP
- Isolation of Hazardous Energy SWP
- Bypassing Critical Protections SWP
- Hot Work SWP
- **SimOps SWP**
- **Confined Space Entry SWP**
- **Behavior to Support MSW**
- Standard Operating Procedure Qualification Procedure
- Excavation SWP
- **Work at Height SWP**
- Lifting & Rigging SWP
- Electrical Safety SWP
- Training and Competency Procedure
- Developing and Maintaining Safe Work Practice Procedure
- **Hazard Identification**

---

*Note: **Blue Bold** = 2009 Priority Items*



# Thailand MSW Implementation 2009 Focus

- Continue to reinforce and improve effectiveness of implemented Safe Work Practices and Procedures.
- Implementation and training for selected high priority Safe Work Practices
- Perform reviews and verification of process application through compliance monitoring.
- Work with CHESM Process to provide clarification, guidance and updates for expectations aligned with the MSW Process.
  - Orientation materials
  - HES Exhibits and Contractor Handbooks
  - Qualification and Selection
  - Interim Reviews / Audits
  - Onsite Inspections
- Work with you to implement and improve the MSW process for sustained effectiveness.



## *How does the MSW process apply to you?*

- Contractors shall utilize a process consistent with the design and intent of the Chevron Managing Safe Work process.
- *Contractor MSW process activities (e.g., permitting, safe work practices, SOPs, etc.) within Chevron Operational Control are expected to meet the requirements of the Managing Safe Work (MSW) process.*
- Contractors' use of their MSW process shall be reviewed through the Contractor Health, Environment & Safety Management (CHESM) process.

## *How does the MSW process apply to you?*

- The SBU and your contract owner will work with you through the Contractor HES Management (CHESM) process to determine if the SBU MSW process, specific procedures or Safe Work Practices, etc. will be used, and/or your process may be used.
  - May vary for different facilities / types of activities
  - May be a combination of both



# What is your role in Managing Safe Work?

- Understand the Chevron MSW requirements. Work with your contract owner via the CHESM process to.
  - Review your current practices to ensure that your Safe Work Practices meet or exceed Chevron requirements.
  - If there are any gaps, work together with Chevron to develop and implement a gap closure plan
  - Support the MSW implementation by ensuring that supervisors and employees are properly trained, understand and follow the MSW process and procedures.
  - Visit the job site regularly to review and enforce Safe Work Practice use and identify improvement opportunities.
  - Share your ideas for improvement with us.



## Where can you get more information regarding the MSW Process?

- During the CHESM Review Process
- From your Chevron Contract Owner
- From your Chevron HES Representative
- From the Chevron MSW Process Advisor
- From the Chevron Contractor Web site.



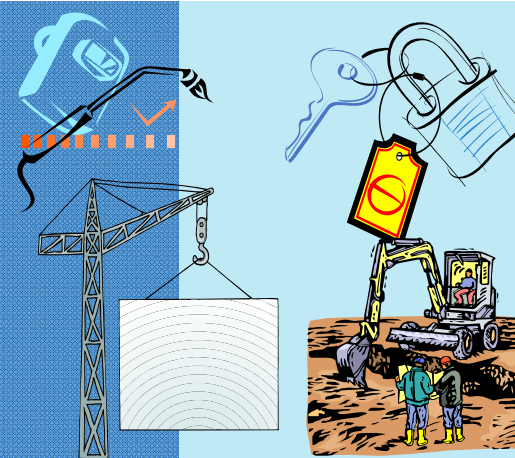
## What are the expectations of the Thailand Management Team?

- Workforce injuries and incidents caused by not following safe work practices/procedures should be reduced over time.

**“We want everyone to return home safely”**



Questions?



Thank you ... ..